

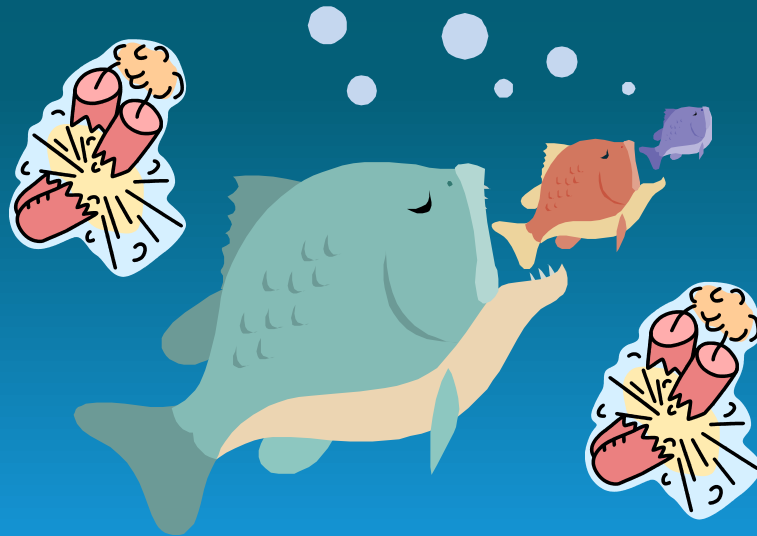


# Environmental Quiz Show

Test your Environmental Knowledge!

# True or False?

Underwater explosives can be used in the state of Oklahoma.





# False

There is no mechanism to get approval and any fish killed in the process were done so illegally according to ODWC regulations.

# True or False?

When digging at the job site,  
you may keep any artifacts you  
find.





# False

It is illegal to keep  
archeological artifacts found at  
a construction site.



Would this site pass a  
termination inspection?



NO

70% of the native background cover must be established before a construction site can pass a termination inspection.

# True or False?

You need a permit to pump water from a creek, stream, river or lake.







# True

A permit must be obtained from the Oklahoma Water Resources Board.



# What is a BMP?

# Best Management Practice

It can be a device such as silt fence. It can be a practice such as regular maintenance of construction vehicles to prevent leaks.

# True or False?

Swallows are an endangered species.





False

Swallows are not an endangered or threatened species but are protected by the Migratory Bird Treaty Act.

## construction company pays \$372,750 for violating federal Migratory Bird Treaty Act

is responsible for the destruction of 818 eggs and 1,491 nests of cliff swallows, a bird protected by the Migratory Bird Treaty Act, during a 2012 bridge repair project in Harper County, according to court records.

FROM STAFF REPORTS • Modified: January 15, 2014 at 7:16 pm • Published: January 15, 2014

A construction company and one employee were reprimanded Tuesday for violating the Migratory Bird Treaty Act after hundreds of cliff swallows and their nests were destroyed during a 2012 bridge repair project in Harper County.

According to court records and the nonprosecution agreement, was responsible for the destruction of 818 eggs and 1,491 nests during joint expansion repair work contracted through the Oklahoma Department of Transportation on May 25, 2012, at the Otter Creek Bridge on U.S. 270.

The cliff swallow is federally protected under the Migratory Bird Treaty Act, which creates a misdemeanor criminal sanction for the taking of protected species by any means and in any manner without a permit, regardless of fault. Cliff swallows are one of 1,026 species of birds protected by the act.

### Company fined

paid \$372,750 to the North American Wetlands Conservation Fund as part of a nonprosecution agreement with the U.S. Fish and Wildlife Service and the U.S. attorney's office in Oklahoma City.

, pleaded guilty to one misdemeanor count of scraping down a nest containing an egg of a migratory cliff swallow. was sentenced to three months of probation and 10 hours of community service.

"Protecting and preserving our country's natural resources, including wildlife, is an important responsibility that we take very seriously," said Sanford Coats, U.S. attorney in Oklahoma City, in a news release.

When construction has been completed, can you stabilize the site with winter wheat or annual rye grass?





# NO

Those grasses could be utilized for temporary stabilization but final stabilization must be with perennial vegetation for DEQ permit termination.



If you find a tank on a construction site, can you dig it up?



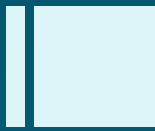


NO

Always call the Environmental Programs Division when you encounter something unexpected.

What are some warning signs that you have encountered a hazardous material?



- 
- Does it smell funny?
  - Are you feeling faint?
  - Do you have a headache, not related to your boss?
  - Have any of your co-workers passed out?
  - Do you feel itchy?
  - Do you have a rash?
  - Are your eyes burning?

You do not need to have all of these to call.  
If you experience any of these, NOTIFY  
SOMEONE.

When land clearing at the construction site, can you burn the debris?



# Maybe

- Certain counties require the use of an Air Curtain Incinerator (Canadian, Cleveland, Creek, Grady, Lincoln, Logan, McClain, Oklahoma, Okmulgee, Osage, Pawnee, Rogers, Tulsa and Wagoner Counties)
- Other restrictions apply, contact your local ODEQ Environmental Specialist before you burn.

Is fugitive dust a big deal?



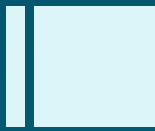


# Yes

It isn't just a kooky regulatory term but an actual public safety issue. Water down your site or phase projects when possible.







Who confers with  
Archeological/Cultural  
Resources about  
borrow pits?



# The Resident Engineer

According to 107.09

Are Spill Prevention Control and Countermeasure (SPCC) Plans necessary on construction projects?





# Maybe

If you store greater than 1320 gallons of any oil/petroleum products, YES.

If you arrive at the construction site and discover that someone has illegally dumped a large quantity of tires, what do you do?





# Contact the Environmental Programs Division

We will assist you with the  
disposal.

# True or False

All waste generated on a bridge painting project must have a TCLP prior to disposal?





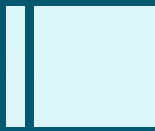


# True

Send a representative sample to a DEQ approved lab for TCLP results before disposal. Environmental Programs Division can assist you with this.

What do I do if an unmarked human burial is discovered or reported to me?





Immediately cease all activity in the surrounding area and notify the Resident Engineer. Do not resume work until given clearance by the Resident Engineer.

# Identify the polluted water.

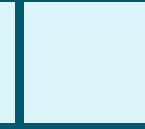


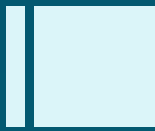


A

The natural color of the water is blackish. The “A” water is polluted with sediment runoff from a construction site.

Can the reasonable  
and prudent measures  
be changed for  
endangered species?





Possibly  
ODOT Environmental  
Programs Division facilitates  
negotiations between the  
contractor, FHWA, and the  
USFWS

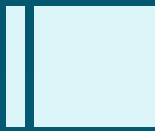
Before transporting hazardous waste, which of the following must be submitted to the Resident Engineer?

- A. A complete Oklahoma DEQ Land Protection Division Disposal Plan Application for large quantity generator projects.
- B. Laboratory Test Results
- C. Waste Classification Statement.
- D. Hazardous Waste Manifest



All of the above.





Is written approval from the Resident Engineer required when placing a borrow pit within 500 feet of the right of way?



# YES

It ensures that there is no confusion between the contractor and the Resident Engineer about what condition the site is to be left in.

For bridge painting with hazardous waste, is it acceptable to submit all required quarterly reports to ODEQ at the end of the job?





NO

They must be submitted every quarter, even if there was no activity.

Can you send hazardous waste out of state to be disposed?



# NO

- Use a State of Oklahoma Treatment, Storage and Disposal (TSD) facility for waste disposal.
- Environmental Programs Division can assist you with this.

Is this a historical site?





YES



What if there is no water in the creek? Do the rules still apply?





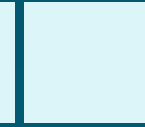
YES

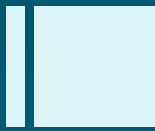
Because it might rain  
tomorrow.

How frequently do I have to clean up off-site tracking from the job site?



Daily.





Incidental Take of an  
endangered species is  
just the approved  
footprint of the job?

# NO!

It is ...

- Where
- How long
- The time of year
- Any actions within the footprint

What if the plan notes  
are not clear to me?







ASK!

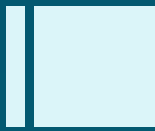
Always, always, always  
ask.



Where did all of these  
Environmental  
Regulations come from?



- The National Environmental Policy Act (NEPA) was signed into law on January 1, 1970.
- The EPA was created on December 2, 1970, by President Richard Nixon.



A major driver for enacting NEPA were the freeway revolts that occurred in response to the bulldozing of many communities and ecosystems around the country as the Interstate Highway System was being built during the 1960s.